

# WALL TAG

Engineered Environmental Solutions  
Smarter infrastructure

## EROSION CONTROL BLANKETS

### BIO-DEGRADABLE ECB

Geotag Erosion Blankets are made from natural coir fibres derived from husks of coconuts. The natural coir fibres provide good water absorption, high tensile strength and are almost 100% bio-degradable. The PP mesh which holds the fibre in place is photo-degradable.

Geotag Erosion Control Blankets are excellent for protecting newly graded slopes and open areas. They are easy to install and good for temporary erosion control on highly erodable areas and slopes.



Used in Earthwork for erosion protection.



Aerial view of Erosion control blanket laying

### APPLICATIONS

- Temporary Erosion Protection During Construction
- Re-vegetation of Cut and Fill Slopes
- Golf Course and Leisure Developments
- Building and Residential Projects
- Streambanks and Shorelines
- Reclamation of Mined Land
- Landscaping
- Reinstatement of Logging Area



Used for erosion protection



ECB in roll form

### 100% BIO-DEGRADABLE ECB

Geotag Jute Coir ECB is made from coconut or other natural fibres. Both top and bottom side of Geotag Jute coir blankets are sewn by 100% organic mesh (Jute Net and Cotton thread).

Geotag Jute Coir ECB will provide immediate protection of the soil and prevent the loss of seeds due to wind and rain erosion, and promote the establishment of vegetation. Coconut fibre absorbs and retains moisture which then enters the plant in dry periods. It also keeps moisture in the soil hence resulting in healthy development of vegetation. Geotag erosion control blankets are attached to the ground with wooden dowels.



Use in area where fire hazard is a concern

## GREENFIX

### FIRE CLASSIFIED EROSION CONTROL BLANKET

All natural fibre blankets have the disadvantage that in hot tropical climate the fibres quickly become dry and can catch fire by just a cigarette.

The new product range GREENFIX F<sup>3</sup> combines all the benefits from Erosion Control Blankets and provides additional fire protection according to DIN 4102-1.

The new GREENFIX F<sup>3</sup> unique grass fibres are European origin and specially treated according to best environmental practices, so that these fire free fibres are 100 % biodegradable within 6 to 12 months depending on weather conditions.

The new GREENFIX F<sup>3</sup> product range offers more than just a competition to coirfibre products!

The GREENFIX F<sup>3</sup> Range of products complies with today's stringent environmental standards by using 100% natural fibers and achieving Fire Classification according to EN DIN Norm 4102-1.



Public places where they are prone to fire risk



Sensitive area

## APPLICATIONS

- Public Places (Near Walkways, Linkways, Roads And Pavements)
- Highway Slopes
- Railway Slopes
- Traffic Junction
- Parks/Jogging Tracks /Cycling Tracks
- Construction Projects Near Buildings And Public Amenities.
- Oil & Gas Industries

## SILT FENCE

Geotag Silt Fence is a temporary measure to help in erosion control in many construction activities and disturbed embankments.

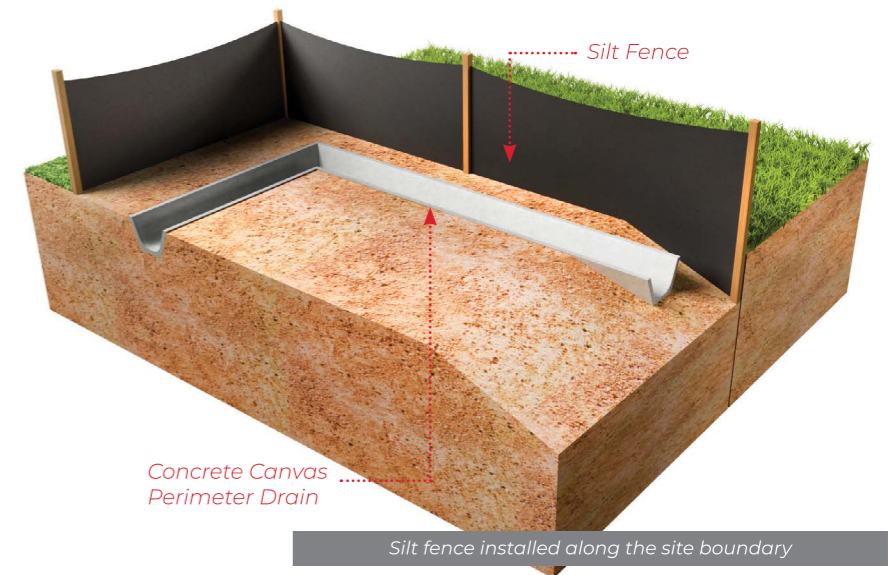
Most of the time during constructions, the ground is often disturbed or left bare that is vulnerable to weather erosion. During rainy seasons, the storm water can cause a situation of pipes and manholes blockages which then resulted in unnecessary flooding and damage to property and contamination of rivers and streams. With the help of the Geotag Silt Fence, it can filters from both run off water and fast running water by allowing sediments or soil to be trapped while the water flow out.

This helps to prevent loss of valuable soil from the area. Geotag Silt Fence is easy to install, cost effective and helps to prevent water pollution.

The Geotag Silt Fence can be installed as an entrenched vertical perimeter barrier fence and is designed to intercept and detain run-off, trapping harmful silt through settlement and filtration before it leaves the site.



showing silt fence in roll form



Silt fence installed along the site boundary



Used for silty water containment

## SILT/ TURBIDITY CURTAIN

Geotag silt curtains are used as protective barriers in marine environment to control pollution caused by suspended sediments, such as silt, soil or stone dust.

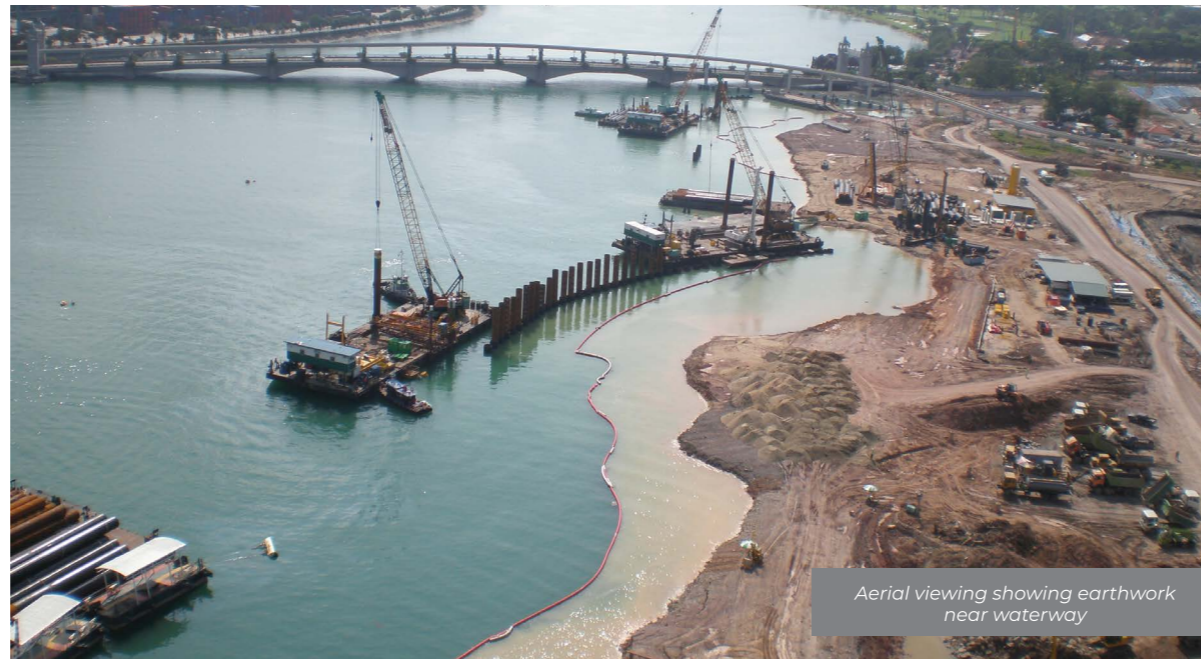
Most of the time, rain water run-off during construction creates sediment in waterways, silt curtains are used to contain this suspended sediment. By confining the sediment to a specific area, the rest of the waterway is then protected from the damaging effects of pollution. Geotag Silt Curtain is used in marine construction, pile driving, site work and dredging activities.

### PROPERTIES

Geotag silt curtain is a flexible high strength woven membrane that is suspended by floats in the water together with the mooring system to stabilize the whole silt curtain system.



Deployed in Reservoir Project



Aerial viewing showing earthwork near waterway



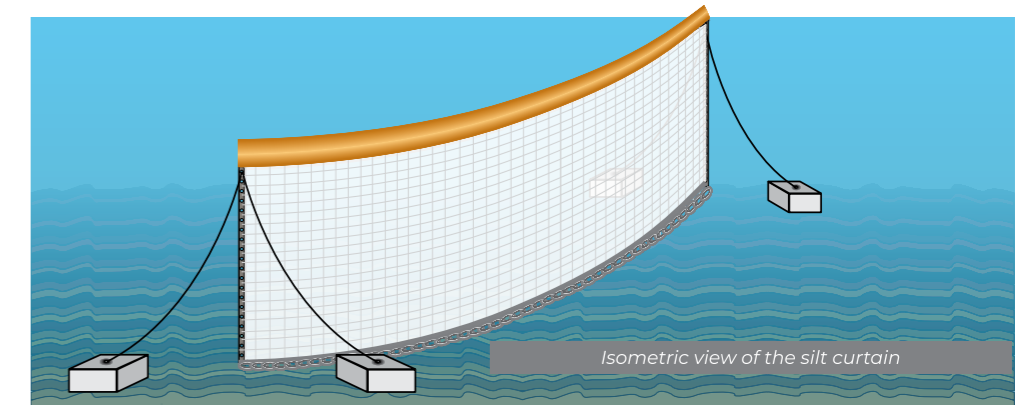
Deployed for shore construction work



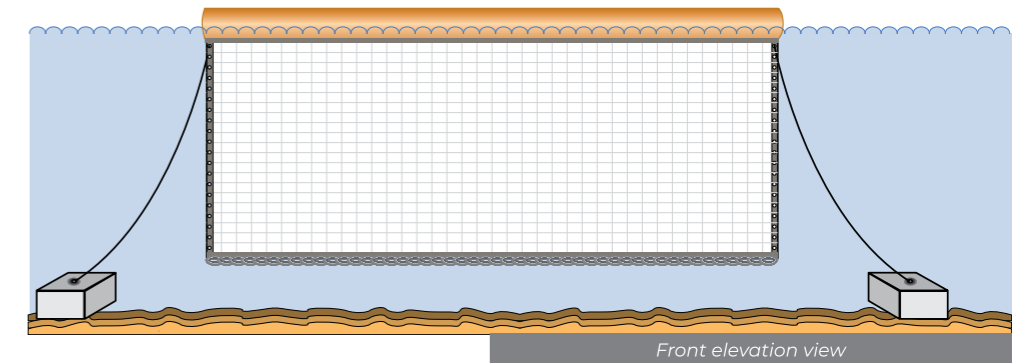
Aerial view of island reclamation work

Schematic illustration of Silt Curtain Installation with Concrete Block as anchor weights.

Anchor Bags or Marine Anchors may alternatively be used as anchor weights.



Isometric view of the silt curtain



Front elevation view

### CONSTRUCTION SITES

Turbidity curtains slows the velocity of the water within the enclosure and allows the silt and sediments to rapidly settle to the bottom thus confining the silty water within the barricade.

### ENVIRONMENTAL REMEDIATION

Turbidity curtains can also be used in environmental remediation to prevent toxic chemicals and heavy metals from leaving the worksite.

### MARINE LIFE PROTECTION

Turbidity barriers work to control the release of organics in the water column, which at concentrated levels can be toxic to marine life.

### APPLICATIONS

- Dredging
- Bridge construction
- Dam removal and restoration
- Marine/ Harbour Project (bulkheads, piers and retaining wall)
- Port and Terminal Projects (Groins, Dikes and Breakwaters)
- Ferry Landings
- Pipeline crossing
- Coastal and Shoreline restoration and rehabilitation
- Intake construction

## TAGCELL CELLULAR CONFINEMENT SYSTEM

Tagcell is a lightweight, expandable cellular confinement system which creates an erosion barrier or structural foundation for embankment and channel slopes, river banks, bridge abutments and for reinforcement of walls of artificial accumulations and as a protection of membranes in landfills.

Tagcell also provide good stabilization and therefore it is recommended for construction of roadbeds, parking lots and road expansion.

Tagcell cellular confinement system is made of 100% high density polyethylene(HDPE) strips which are uniquely bonded together to form a high strength system. It is durable, easy handling and economical. It has a three dimensional honeycomb shaped cellular construction to enable for use on-site or select fill materials which can provide semi-rigid slabs, lateral load distribution, reduced subgrade pressures and reduced based thickness. They are easy to install and space saving as it is collapsible when not in used.



Showing completed slope



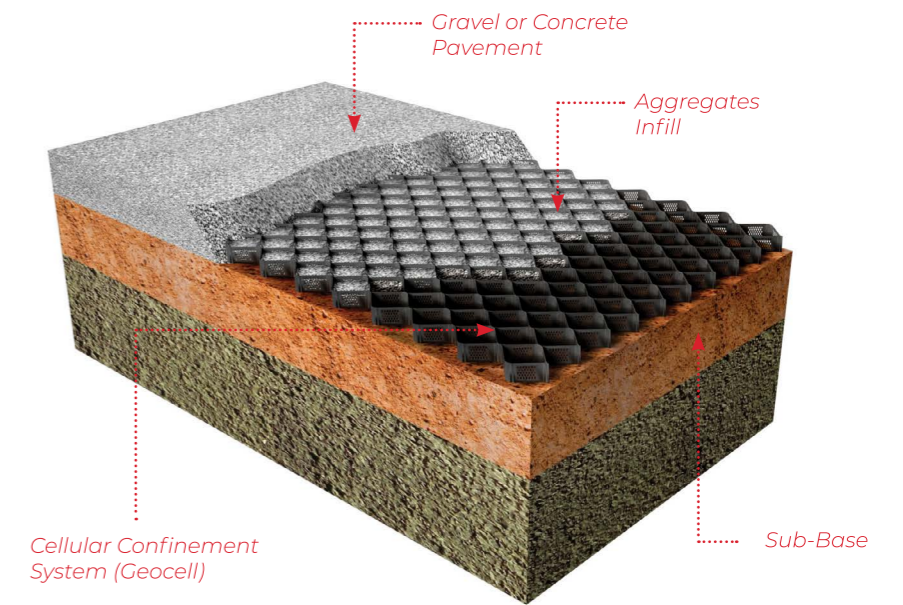
Showing stages of work



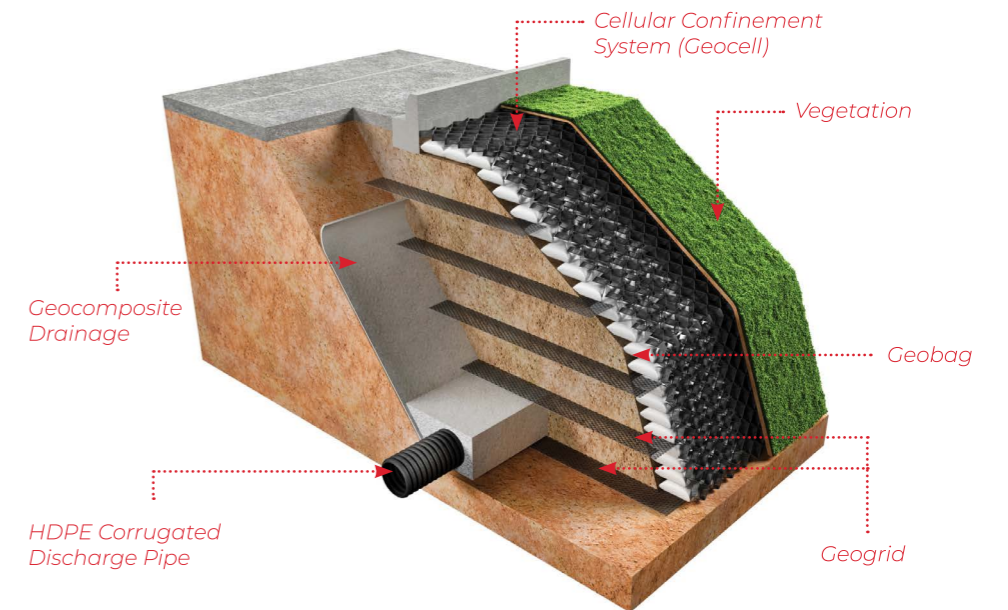
Expanded view



Used in road application



Cellular Confinement System (Geocell)



Geocomposite Drainage

HDPE Corrugated Discharge Pipe

## APPLICATIONS

- Erosion control system
- Earth retention system
- Ground reinforcement
- Channel protection
- Slope Stabilisation
- Embankment

---

**WALL TAG PTE LTD**

52 Genting Lane #01-01, Ruby Land Complex Block 1  
Singapore 349560

Tel : (65) 6398 0308

Fax : (65) 6398 0309

Email : [enquiries@walltag.com.sg](mailto:enquiries@walltag.com.sg)

[www.walltag.com](http://www.walltag.com)